



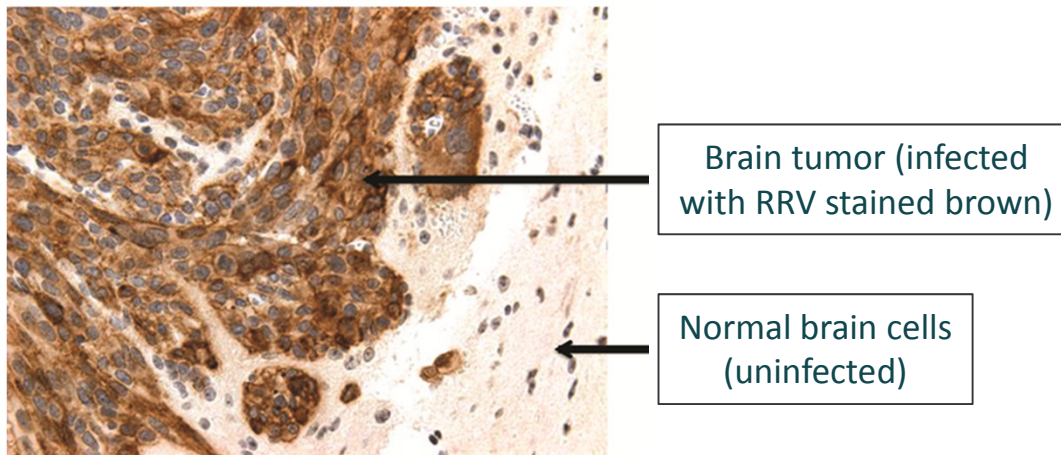
Retroviral Replicating Vector (RRV) Gene Therapy Platform

Copyright. Tocagen Inc.

Tocagen[™]

RRV platform selectively infects cancer cells and persists

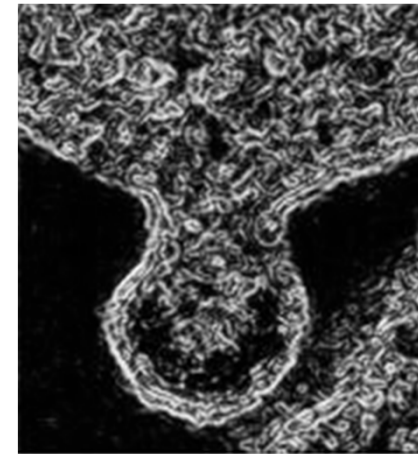
RRVs selectively infect cancer



RRV selective to cancer cells

- RRVs infect malignant tumors mainly due to known immune deficiency in cancer
- Yet RRVs are not known human pathogens and have limited virulence genes to infect healthy cells in vivo

Creates a factory for RRV production

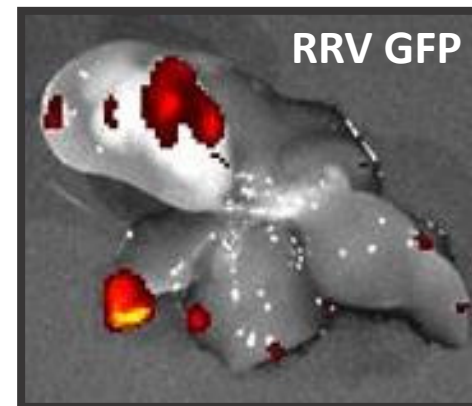
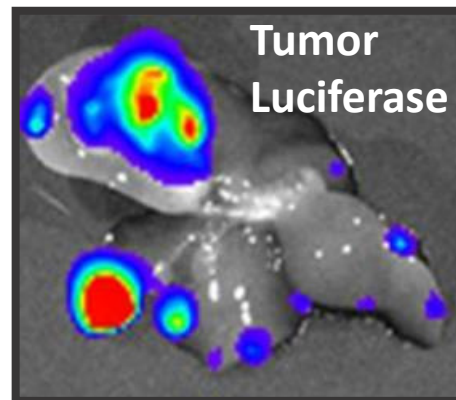


RRV budding from infected cell

- RRVs integrate in cancer cells
- Stealthily spread through tumor by budding rather than lysis

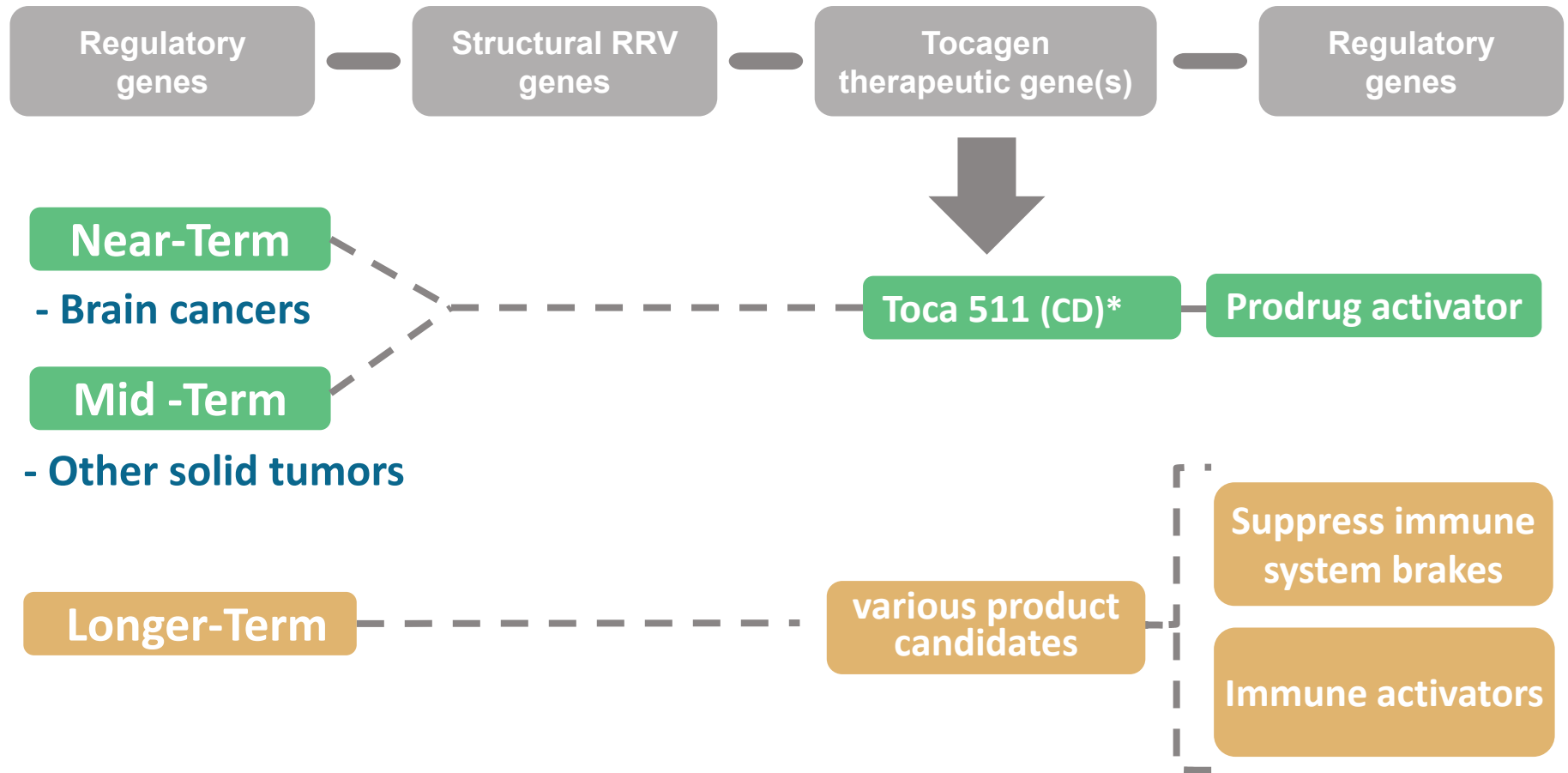
Electron micrograph used with permission from: Retroviruses. JM Coffin, SH Hughes, and HE Varmus. Cold Spring Harbor (NY): Cold Spring Harbor Laboratory Press; 1997. Page 30. Copyright © 1997, Cold Spring Harbor Laboratory Press.

Selective infection of colorectal cancer metastases to liver after intravenous RRV



Images of same liver in colorectal cancer metastases model after IV delivery*

Versatile RRV platform drives pipeline



*CD = Cytosine Deaminase